

Fiber Optic Sliding Rack Mount Powder Coated Patch Panel

The sliding rack mount powder coated series patch panels come complete with the adapters required and simple splice management kit. In addition, the patch panels are specially designed with a working tray with the capability to be lowered to 45 or even lower to 10 degree working angle. This provides the perfect working platform for simple installation or easy maintenance and access even after the panels are installed in the rack.

Key Features

- Recessed panel option
- Environmentally friendly materials & packaging
- High quality finish, no sharp edges

FPP124 Series

19 Inch Rack Mount Fiber Patch Panel, 1U Height, Maximum 24/48 Ports



| Part No. | Description |
|------------------------|---|
| FPP124-24-ST-xx-SX(BK) | 19 Inch Rack Mount Fiber Patch Panel 1U, Powder Coated, 24 port with ST Simplex SM/MM Adapter, Loaded with Spool, Cable Gland, Splice Tray and Sleeves, Black Colour |
| FPP124-24-SC-xx-SX(BK) | 19 Inch Rack Mount Fiber Patch Panel 1U, Powder Coated, 24 port with SC Simplex SM/MM Adapter, Loaded with Spool, Cable Gland, Splice Tray and Sleeves, Black Colour |
| FPP124-24-FC-xx-SX(BK) | 19 Inch Rack Mount Fiber Patch Panel 1U, Powder Coated, 24 port with FC Simplex SM/MM Adapter, Loaded with Spool, Cable Gland, Splice Tray and Sleeves, Black Colour |
| FPP124-48-MT-xx-DX(BK) | 19 Inch Rack Mount Fiber Patch Panel 1U, Powder Coated, 48 port with MTRJ Duplex SM/MM Adapter, Loaded with Spool, Cable Gland, Splice Tray and Sleeves, Black Colour |
| FPP124-48-LC-xx-DX(BK) | 19 Inch Rack Mount Fiber Patch Panel 1U, Powder Coated, 48 port with LC Duplex SM/MM Adapter, Loaded with Spool, Cable Gland, Splice Tray and Sleeves, Black Colour |

Notes: *To order other port configuration, replace the 24 with desired number of port up to 24 for SC / ST / FC simplex adapter configuration and replace 48 with desired number of port up to 48 for LC/MTRJ duplex adapter configuration, the rest of the outlet will be filled with blank plugs.* Replace xx with SM for Singlemode adapter and MM for Multimode adapter. *All LC and MTRJ adapters are of duplex configuration. *Other adapter types are available.

FPP148 Series

19 Inch Rack Mount Fiber Patch Panel, 1U Height, Maximum 48 Ports



| Part No. | Description |
|------------------------|--|
| FPP148-48-SC-xx-DX(BK) | 19 Inch Rack Mount Fiber Patch Panel 1U, Powder Coated, 48 port with SC Duplex SM/MM Adapter, Loaded with Spool, Cable Gland, Splice Tray and Sleeves, Black Colour |
| FPP148-48-ST-xx-DX(BK) | 19 Inch Rack Mount Fiber Patch Panel 1U, Powder Coated, 48 port with ST Duplex SM/MM Adapter, Loaded with Spool, Cable Gland, Splice Tray and Sleeves, Black Colour |
| FPP148-48-LC-xx-QX(BK) | 19 Inch Rack Mount Fiber Patch Panel 1U, Powder Coated, 48 port with LC Quad Duplex SM/MM Adapter, Loaded with Spool, Cable Gland, Splice Tray and Sleeves, Black Colour |

Notes: *To order other port configuration, replace the 48 with desired number of port up to 48 for SC / ST duplex adapter configuration and replace 48 with desired number of port up to 48 for LC quad duplex adapter configuration, the rest of the outlet will be filled with blank plugs. * Replace xx with SM for Singlemode adapter and MM for Multimode adapter.

FPP248 Series

19 Inch Rack Mount Fiber Patch Panel, 2U Height, Maximum 48/96 Ports

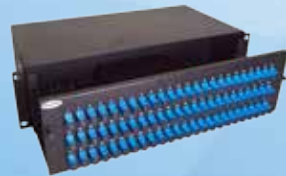


| Part No. | Description |
|------------------------|---|
| FPP248-48-ST-xx-SX(BK) | 19 Inch Rack Mount Fiber Patch Panel 2U, Powder Coated, 48 port with ST Simplex SM/MM Adapter, Loaded with Spool, Cable Gland, Splice Tray and Sleeves, Black Colour |
| FPP248-48-SC-xx-SX(BK) | 19 Inch Rack Mount Fiber Patch Panel 2U, Powder Coated, 48 port with SC Simplex SM/MM Adapter, Loaded with Spool, Cable Gland, Splice Tray and Sleeves, Black Colour |
| FPP248-48-FC-xx-SX(BK) | 19 Inch Rack Mount Fiber Patch Panel 2U, Powder Coated, 48 port with FC Simplex SM/MM Adapter, Loaded with Spool, Cable Gland, Splice Tray and Sleeves, Black Colour |
| FPP248-96-MT-xx-DX(BK) | 19 Inch Rack Mount Fiber Patch Panel 2U, Powder Coated, 96 port with MTRJ Duplex SM/MM Adapter, Loaded with Spool, Cable Gland, Splice Tray and Sleeves, Black Colour |
| FPP248-96-LC-xx-DX(BK) | 19 Inch Rack Mount Fiber Patch Panel 2U, Powder Coated, 96 port with LC Duplex SM/MM Adapter, Loaded with Spool, Cable Gland, Splice Tray and Sleeves, Black Colour |

Notes: *To order other port configuration, replace the 48 with desired number of port up to 48 for SC / ST / FC simplex adapter configuration and replace 96 with desired number of port up to 96 for LC/MTRJ duplex adapter configuration, the rest of the outlet will be filled with blank plugs. * Replace xx with SM for Singlemode adapter and MM for Multimode adapter. *All LC and MTRJ adapters are of duplex configuration. *Other adapter types are available.

FPP372 Series

19 Inch Rack Mount Fiber Patch Panel, 3U Height, Maximum 72/144 Ports

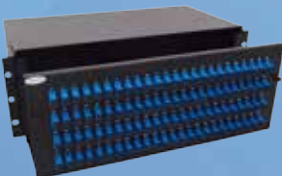


| Part No. | Description |
|-------------------------|--|
| FPP372-72-ST-xx-SX(BK) | 19 Inch Rack Mount Fiber Patch Panel 3U, Powder Coated, 72 port with ST Simplex SM/MM Adapter, Loaded with Spool, Cable Gland, Splice Tray and Sleeves, Black Colour |
| FPP372-72-SC-xx-SX(BK) | 19 Inch Rack Mount Fiber Patch Panel 3U, Powder Coated, 72 port with SC Simplex SM/MM Adapter, Loaded with Spool, Cable Gland, Splice Tray and Sleeves, Black Colour |
| FPP372-72-FC-xx-SX(BK) | 19 Inch Rack Mount Fiber Patch Panel 3U, Powder Coated, 72 port with FC Simplex SM/MM Adapter, Loaded with Spool, Cable Gland, Splice Tray and Sleeves, Black Colour |
| FPP372-144-MT-xx-DX(BK) | 19 Inch Rack Mount Fiber Patch Panel 3U, Powder Coated, 144 port with MTRJ Duplex SM/MM Adapter, Loaded with Spool, Cable Gland, Splice Tray and Sleeves, Black Colour |
| FPP372-144-LC-xx-DX(BK) | 19 Inch Rack Mount Fiber Patch Panel 3U, Powder Coated, 144 port with LC Duplex SM/MM Adapter, Loaded with Spool, Cable Gland, Splice Tray and Sleeves, Black Colour |

Notes: *To order other port configuration, replace the 72 with desired number of port up to 72 for SC / ST / FC simplex adapter configuration and replace 144 with desired number of port up to 144 for LC/MTRJ duplex adapter configuration, the rest of the outlet will be filled with blank plugs. * Replace xx with SM for Singlemode adapter and MM for Multimode adapter. *All LC and MTRJ adapters are of duplex configuration. *Other adapter types are available.

FPP496 Series

19 Inch Rack Mount Fiber Patch Panel, 4U Height, Maximum 96/192 Ports



| Part No. | Description |
|-------------------------|--|
| FPP496-96-ST-xx-SX(BK) | 19 Inch Rack Mount Fiber Patch Panel 4U, Powder Coated, 96 port with ST Simplex SM/MM Adapter, Loaded with Spool, Cable Gland, Splice Tray and Sleeves, Black Colour |
| FPP496-96-SC-xx-SX(BK) | 19 Inch Rack Mount Fiber Patch Panel 4U, Powder Coated, 96 port with SC Simplex SM/MM Adapter, Loaded with Spool, Cable Gland, Splice Tray and Sleeves, Black Colour |
| FPP496-96-FC-xx-SX(BK) | 19 Inch Rack Mount Fiber Patch Panel 4U, Powder Coated, 96 port with FC Simplex SM/MM Adapter, Loaded with Spool, Cable Gland, Splice Tray and Sleeves, Black Colour |
| FPP496-192-MT-xx-DX(BK) | 19 Inch Rack Mount Fiber Patch Panel 4U, Powder Coated, 192 port with MTRJ Duplex SM/MM Adapter, Loaded with Spool, Cable Gland, Splice Tray and Sleeves, Black Colour |
| FPP496-192-LC-xx-DX(BK) | 19 Inch Rack Mount Fiber Patch Panel 4U, Powder Coated, 192 port with LC Duplex SM/MM Adapter, Loaded with Spool, Cable Gland, Splice Tray and Sleeves, Black Colour |

Notes: *To order other port configuration, replace the 96 with desired number of port up to 96 for SC / ST / FC simplex adapter configuration and replace 192 with desired number of port up to 192 for LC/MTRJ duplex adapter configuration, the rest of the outlet will be filled with blank plugs. * Replace xx with SM for Singlemode adapter and MM for Multimode adapter. *All LC and MTRJ adapters are of duplex configuration. *Other adapter types are available.